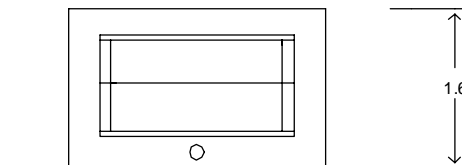
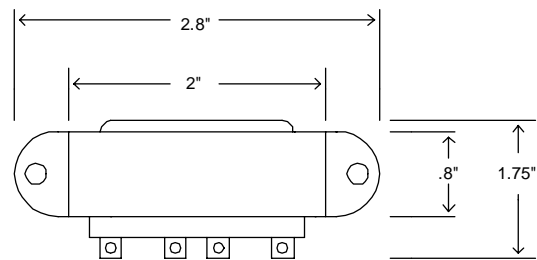
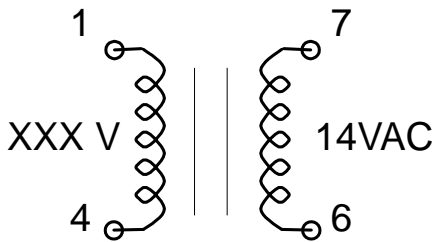


## CHANNEL MOUNT POWER TRANSFORMER

### FEATURES:

- ◆ Combination - Solder or Quick Connect Terminals (0.187" x 0.020")
- ◆ Cost Effective Channel Frame Mounting
- ◆ Dielectric tested to UL/CSA standards.
- ◆ CSA certified LR 16597. UL recognized E105782



<u>P/N</u>	<u>Input</u>	<u>Output</u>
VT600	600V 50-60Hz	14V 0.860A (12VA)
VT347	347V 50-60Hz	
VT230	230V 50-60Hz	
VT120	120V 50-60Hz	
Primary can withstand up to 10% over voltage.		

### ORDERING INFORMATION:

VTXXX - Where XXX is the desired primary voltage

Supplied with four quick connect terminals (crimp-on)