

Application Note

AN2201

WattsOn-MCM Card Firmware Upgrade Procedure

Summary

The firmware for the WattsOn-MCM and the WattsOn-MCM's **cards** is different. The WattsOn-MCM firmware features the network connectivity as well as card co-ordination. However, the **card** firmware manages the features of the measurement features of the respective cards. The firmware update of the WattsOn-MCM takes place via its web interface, identical to the ETport and WattsOn-Mark II (-E4) meter.

The update of the To update the WattsOn-MCM cards, it must be done via Modbus Commander

Preparation:

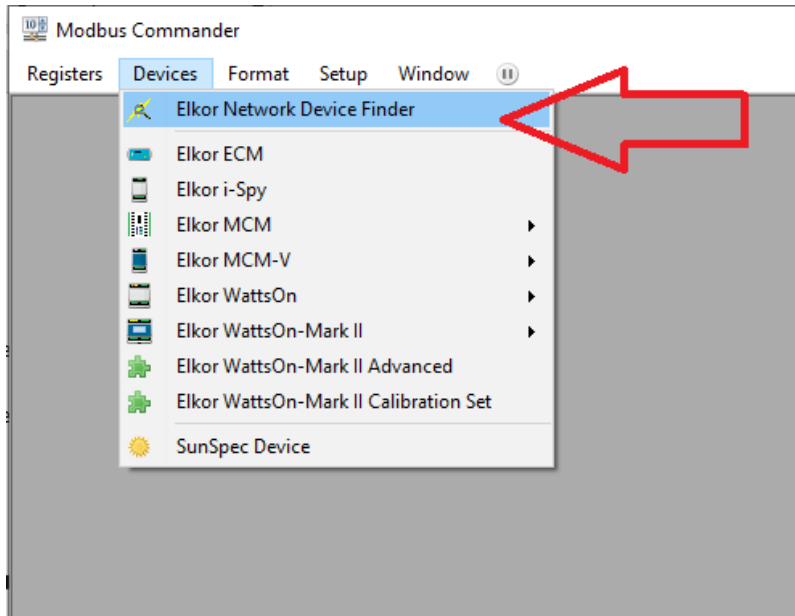
Step 1: Download and install Modbus Commander

1. Download Modbus Commander and install it onto a PC that is connected to the same network subnet as the WattsOn-MCM. The PC must be able to communicate with the WattsOn-MCM via Modbus/TCP.

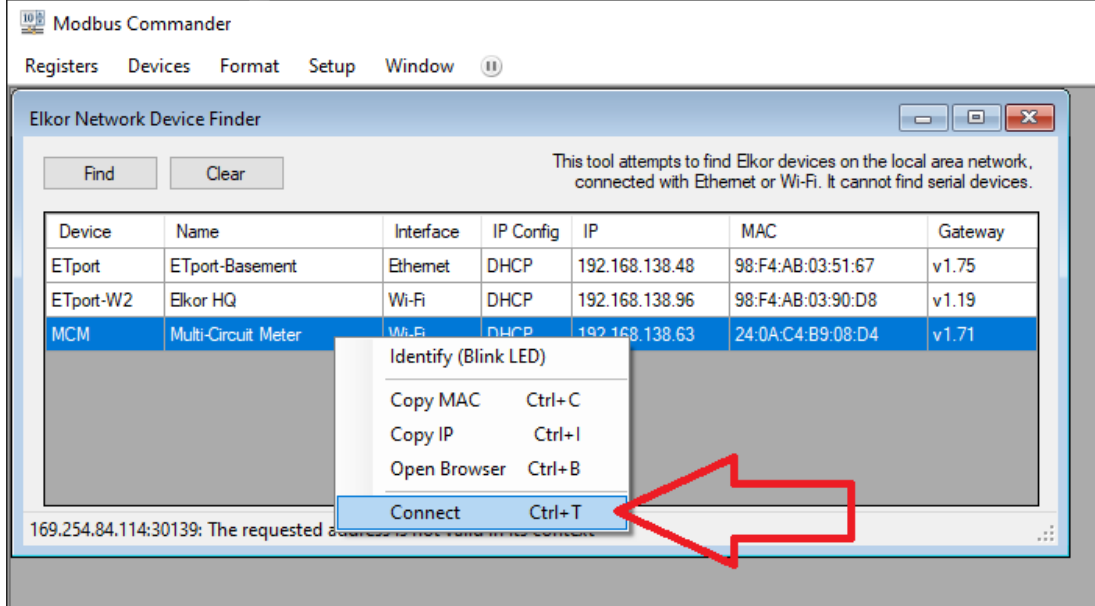
Modbus Commander Download Link:
https://elkor.net/bin/mbcmdr_lite.exe

2. Start Modbus Commander

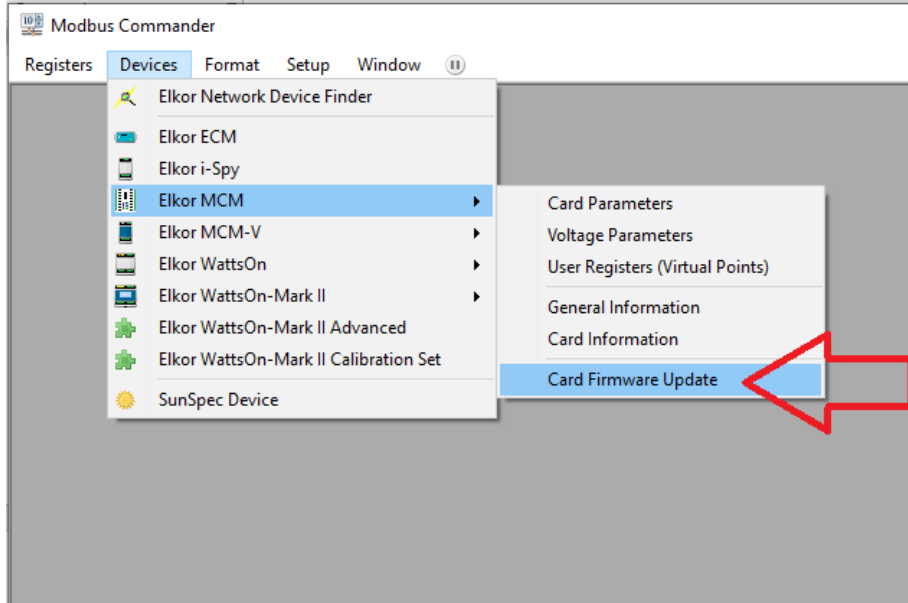
3. Select *Devices* > *Elkor Network Device Finder*



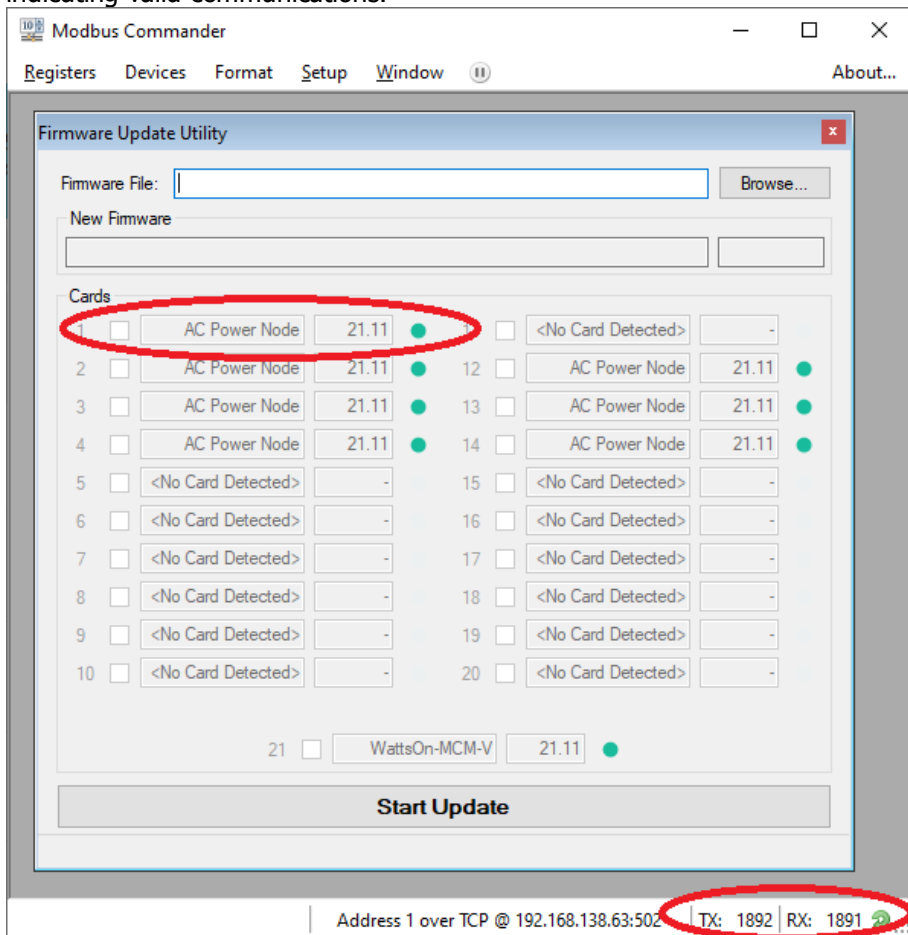
4. Look for the WattsOn-MCM to be updated, right click and select "Connect"



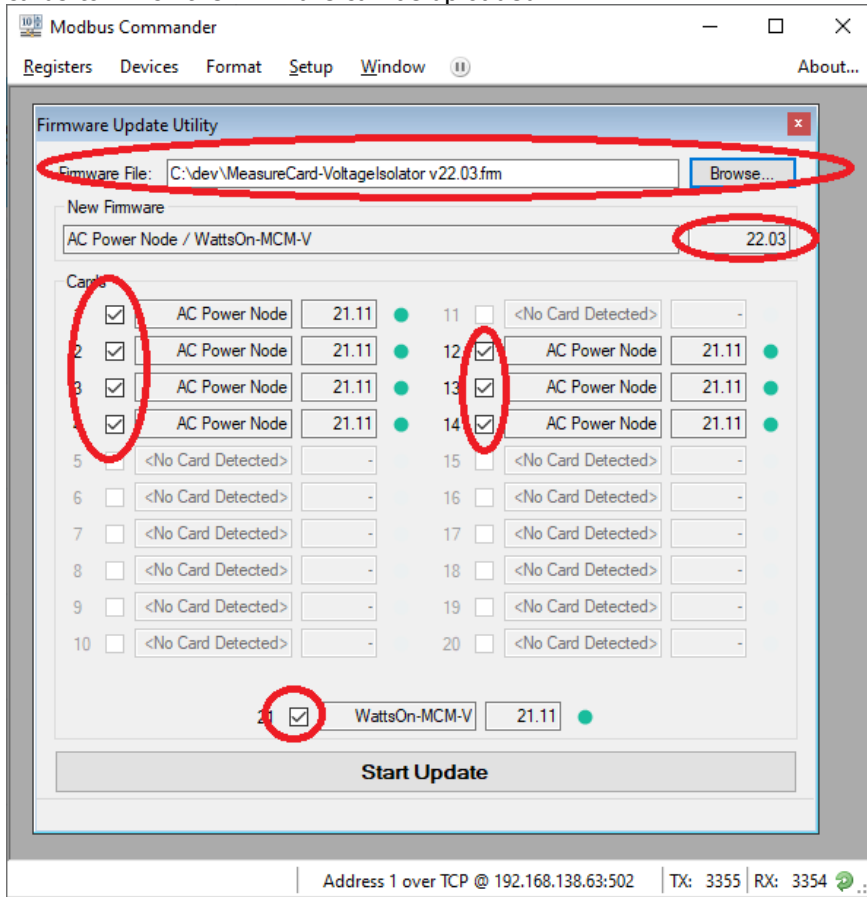
5. Open *Devices > Elkor MCM > Card Firmware Update*



6. The software will scan the available cards and how the current firmware version. If it does not return this data, please confirm proper connection to the device. The TX/RX counters should be consistently counting up indicating valid communications.

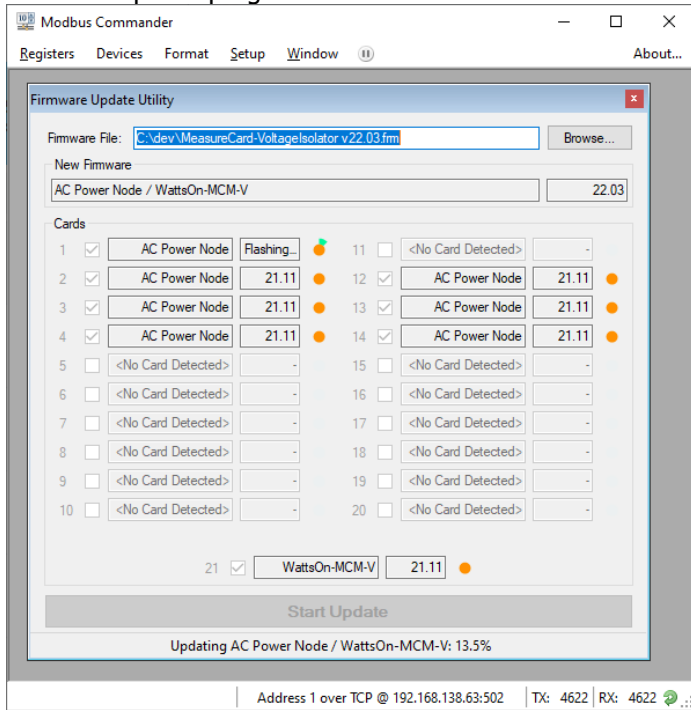


7. Click "Browse" to select the firmware update binary. When selected, Modbus Commander will validate the firmware, and show which cards the firmware applies to. Notice the new firmware version and the applicable cards to which the firmware can be uploaded.



- Click "Start Update". The software will apply the firmware update to each checked card in sequence. The update process takes about 1 minute per card, depending on the network connection speed.

The cards will show orange dots, indicating that they are in bootloader mode. A green progress bar will show the firmware update progress of each card.



- After the update has fully completed, the software will set all of the cards into normal run mode, which will be indicated by a green dot, and the new firmware version should appear.

